

## A bit of botany

The flower of Hepatica's is composed of five visible parts:

1) **Pedicel**: most are lightly to strongly hirsute, greenish, sometimes reddish

2) **Bracts**: (involucral bracts)

Greenish, normally three

With hybrids often up to 5 and incised

3) **Sepals**

These beautiful, coloured parts are **petaloid sepals** often mistakenly called petals, the "perfect form has 6 sepals, but it can go up to 20 or more.

Shape of the sepals is ovate-oblong to ovate-broad, all colours are possible

4) **Male reproductive organs, stamens**: (Androecium)

Stamens

white, green, yellow, red, violet

Filaments: white, green, yellow, violet

Anthers composed of two halves,

the lobes: white, green, yellow, violet

Connective, in between the two lobes

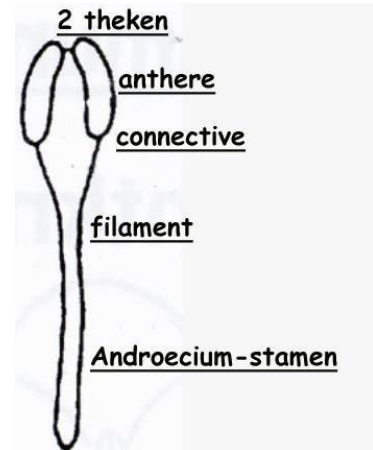
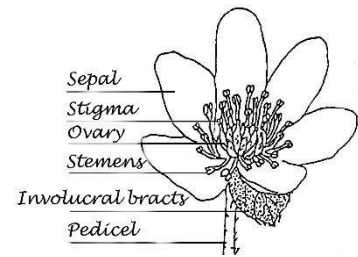
of the anther: white, green, yellow, violet

5) **Female reproductive organs, Pistil**: (Gynoecium) >10

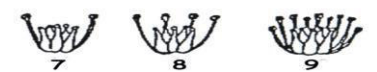
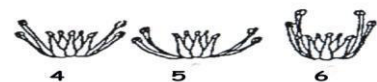
Ovaries: green, yellow

Stylus: green, yellow

Stigma: green, yellow, rarely red



Aggregate ovaries, shapes

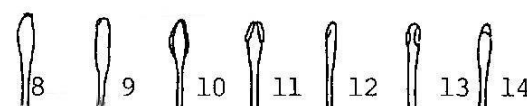


Ovaries + Stamen shapes

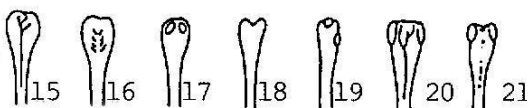
stamen-shaps



spoon-shape



cane-shape



spade-shape

